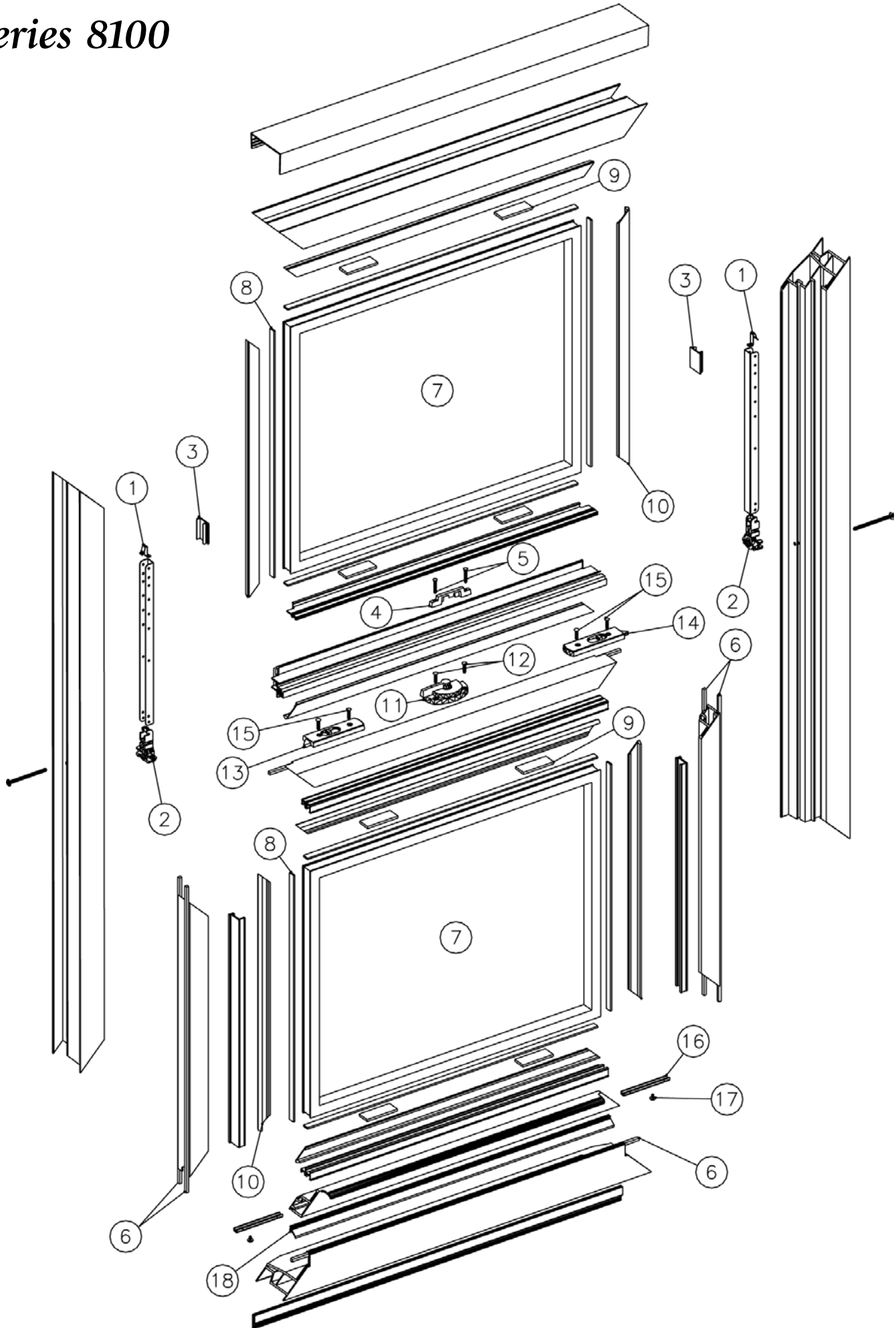


Series 8100



Series 8100

Frame

- 1..... Block & Tackle
- 2..... Balance Shoe
- 3..... Sash Stop
- 4..... Keeper
- 5..... Keeper Screw
- 6..... Woolpile

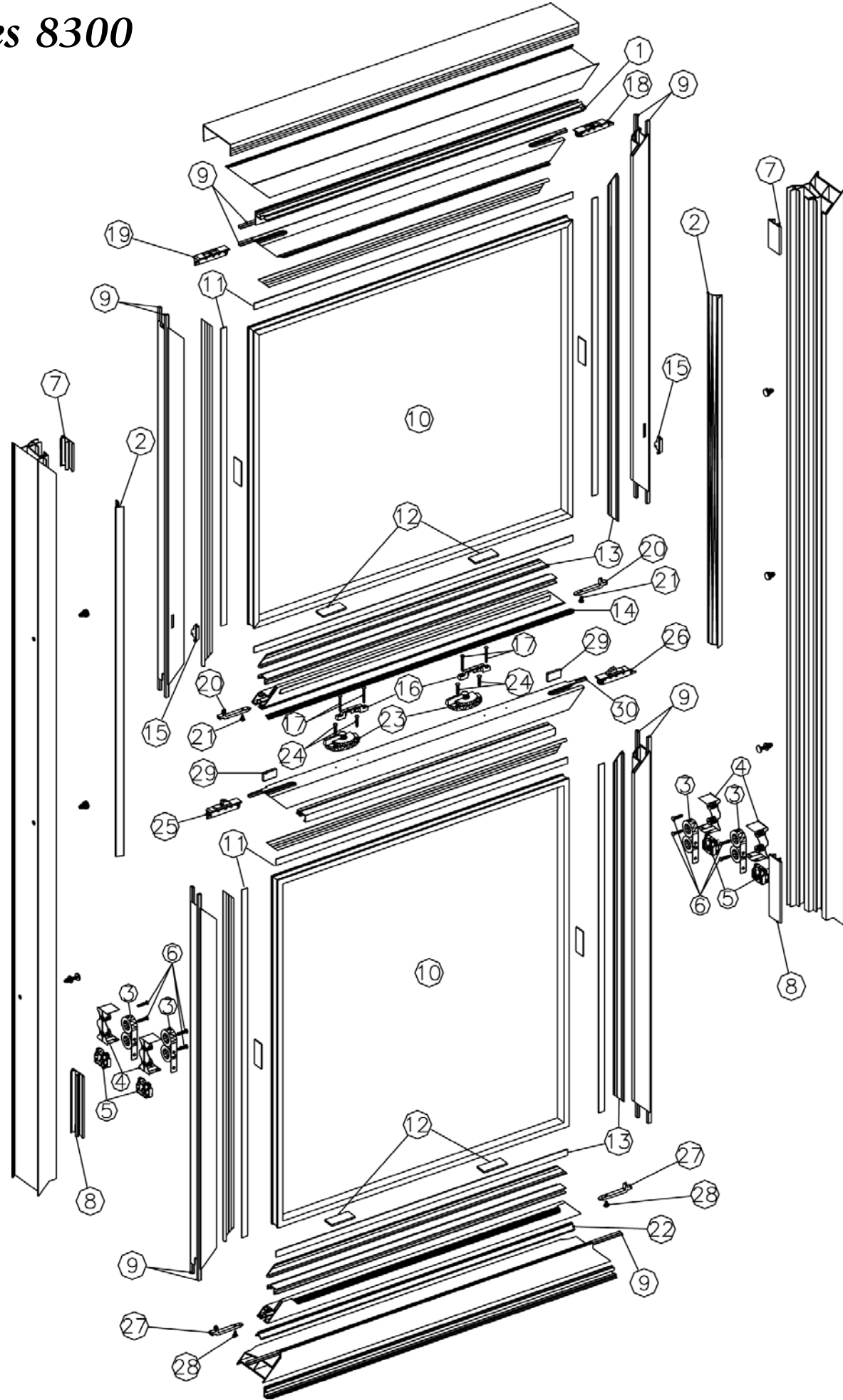
Fixed Glass Panel

- 7..... Insulated Glass Panel
- 8..... Glazing Tape
- 9..... Glazing Block
- 10..... Glazing Bead

Bottom Sash

- 7..... Insulated Glass Panel
- 8..... Glazing Tape
- 9..... Glazing Block
- 10..... Glazing Bead
- 11..... Lock
- 12..... Lock Screw
- 13..... Tilt Latch Right
- 14..... Tilt Latch Left
- 15..... Tilt Latch Screw
- 16..... Pivot Bar
- 17..... Pivot Bar Screw
- 18..... Bulb Seal
- 6..... Woolpile

Series 8300



Series 8300

Frame

1.....	Head Snap-In
2.....	Balance Cover
3.....	Coil Balance
4.....	Coil Carrier
5.....	Balance Shoe
6.....	Coil Balance Screw
7.....	Sash Stop (2.25")
8.....	Sash Stop (5")
9.....	Woolpile

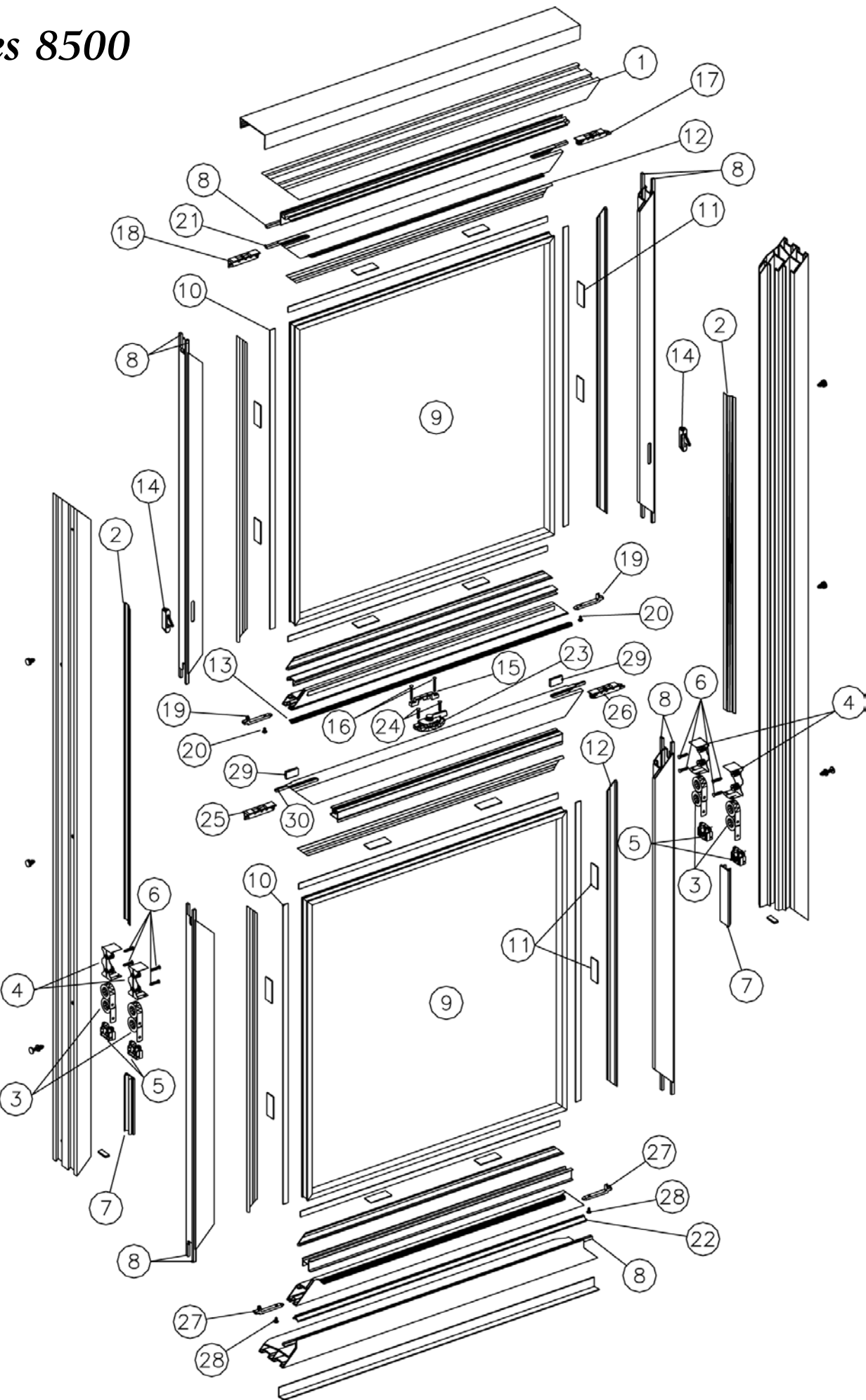
Top Sash

10.....	Insulated Glass Panel
11.....	Glazing Tape
12.....	Glazing Block
13.....	Glazing Bead
14.....	Flag Seal
15.....	Night Latch
16.....	Keeper
17.....	Keeper Screw
18.....	Tilt Latch - Left
19.....	Tilt Latch - Right
20.....	Pivot Bar
21.....	Pivot Bar Screw
9.....	Woolpile

Bottom Sash

10.....	Insulated Glass Panel
11.....	Glazing Tape
12.....	Glazing Block
13.....	Glazing Bead
22.....	Bulb Seal
23.....	Lock
24.....	Lock Screw
25.....	Tilt Latch Right
26.....	Tilt Latch Left
27.....	Pivot Bar
28.....	Pivot Bar Screw
29.....	Fuzzy Wool Pad
9.....	Woolpile
30.....	Woolpile

Series 8500



Series 8500

Frame

- 1..... Head Snap-In
- 2..... Balance Cover
- 3..... Coil Balance
- 4..... Coil Carrier
- 5..... Balance Shoe
- 6..... Coil Balance Screw
- 7..... Sash Stop (5")
- 8..... Woolpile

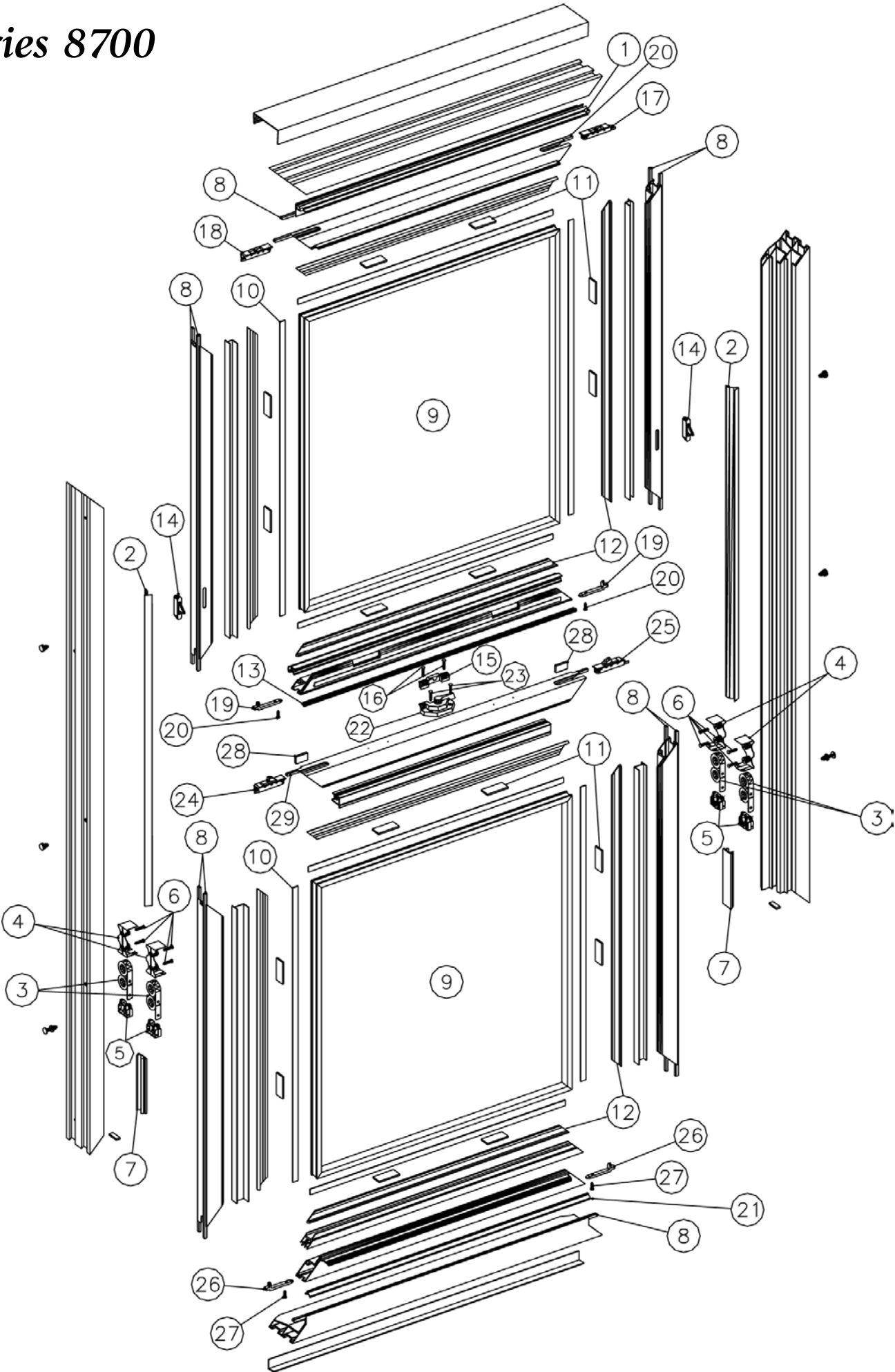
Top Sash

- 9..... Insulated Glass Panel
- 10..... Glazing Tape
- 11..... Glazing Block
- 12..... Glazing Bead
- 13..... Flag Seal
- 14..... Night Latch
- 15..... Keeper
- 16..... Keeper Screw
- 17..... Tilt Latch - Left
- 18..... Tilt Latch – Right
- 19..... Pivot Bar
- 20..... Pivot Bar Screw
- 8..... Woolpile
- 21..... Woolpile

Bottom Sash

- 9..... Insulated Glass Panel
- 10..... Glazing Tape
- 11..... Glazing Block
- 12..... Glazing Bead
- 22..... Bulb Seal
- 23..... Lock
- 24..... Lock Screw
- 25..... Tilt Latch Right
- 26..... Tilt Latch Left
- 27..... Pivot Bar
- 28..... Pivot Bar Screw
- 29..... Fuzzy Wool Pad
- 8..... Woolpile
- 30..... Woolpile

Series 8700



Series 8700

Frame

- 1..... Snap in Header
- 2..... Balance Cover
- 3..... Coil Balance
- 4..... Coil Carrier
- 5..... Balance Shoe
- 6..... Coil Balance Screw
- 7..... Sash Stop (5")
- 8..... Woolpile

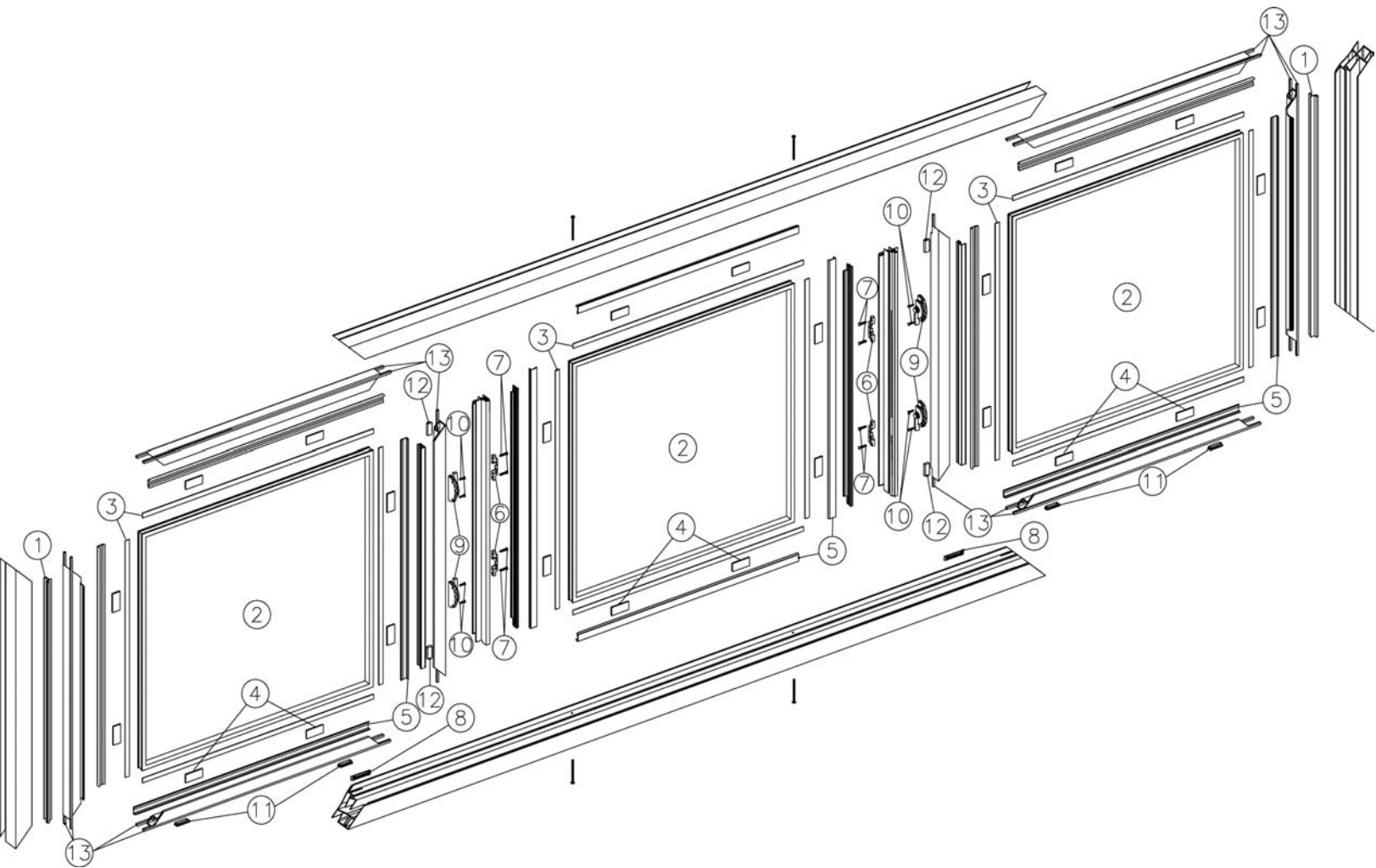
Top Sash

- 9..... Insulated Glass Panel
- 10..... Glazing Tape
- 11..... Glazing Block
- 12..... Glazing Bead
- 13..... Flag Seal
- 14..... Night Latch
- 15..... Keeper
- 16..... Keeper Screw
- 17..... Tilt Latch - Left
- 18..... Tilt Latch – Right
- 19..... Pivot Bar
- 20..... Pivot Bar Screw
- 8..... Woolpile

Bottom Sash

- 9..... Insulated Glass Panel
- 10..... Glazing Tape
- 11..... Glazing Block
- 12..... Glazing Bead
- 21..... Bulb Seal
- 22..... Lock
- 23..... Lock Screw
- 24..... Tilt Latch Right
- 25..... Tilt Latch Left
- 26..... Pivot Bar
- 27..... Pivot Bar Screw
- 28..... Dust Plug
- 8..... Woolpile
- 29..... Woolpile

Series 120/130 Slider
(2-lite & 3-lite)



Series 120/130 Slider
(2-lite & 3-lite)

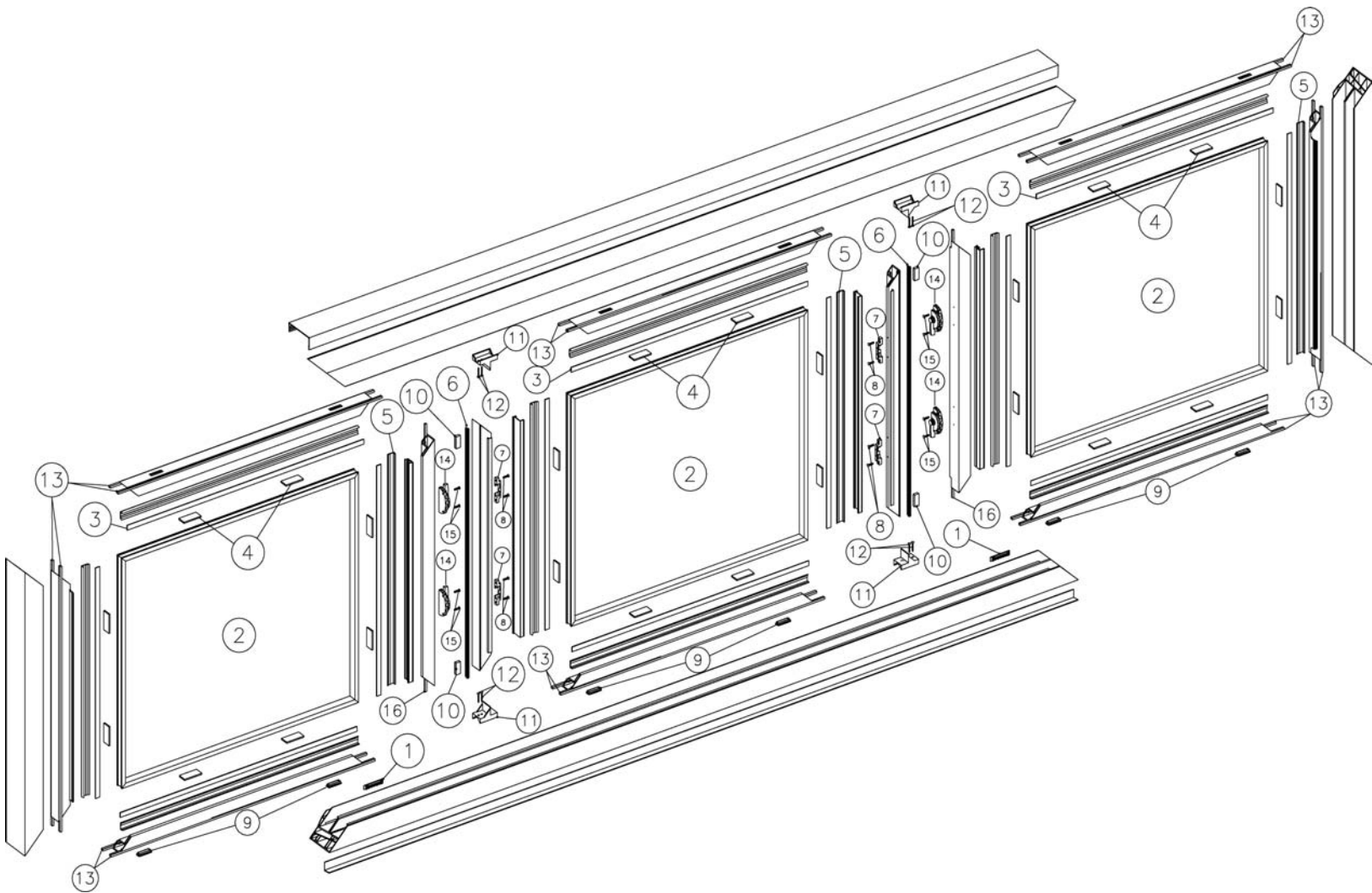
Frame

1.....	Screen Snap In
2.....	Insulated Glass Panel
3.....	Glazing Tape
4.....	Glazing Block
5.....	Glazing Bead
6.....	Keeper
7.....	Keeper Screw
8.....	Weep Hole Cover

Lock Sash (Quantity 2)

3.....	Insulated Glass Panel
4.....	Glazing Tape
5.....	Glazing Block
6.....	Glazing Bead
9.....	Lock
10.....	Lock Screw
11.....	Anti Rock Pads
12.....	Dust Plug
13.....	Woolpile

Series 123/133 Slider
(2-lite & 3-lite)



Series 123/133 Slider
(2-lite & 3-lite)

Frame

- 1..... Weep Hole Cover

Keeper Sash

- 2..... Insulated Glass Panel
- 3..... Glazing Tape
- 4..... Glazing Block
- 5..... Glazing Bead
- 6..... Flag Seal
- 7..... Keeper
- 8..... Keeper Screw
- 9..... Anti Rock Pads
- 10..... Dust plug
- 11..... Center Panel Stop
- 12..... Center panel Stop Screw
- 13..... Woolpile

Lock Sash (Quantity 2)

- 2..... Insulated Glass Panel
- 3..... Glazing Tape
- 4..... Glazing Block
- 5..... Glazing Bead
- 14..... Lock
- 15..... Lock Screw
- 9..... Anti Rock Pads
- 10..... Dust Plug
- 13..... Woolpile
- 16..... Woolpile